

MONTHLY MEMBERSHIP PROGRESS REPORT

LOCATION INDIA

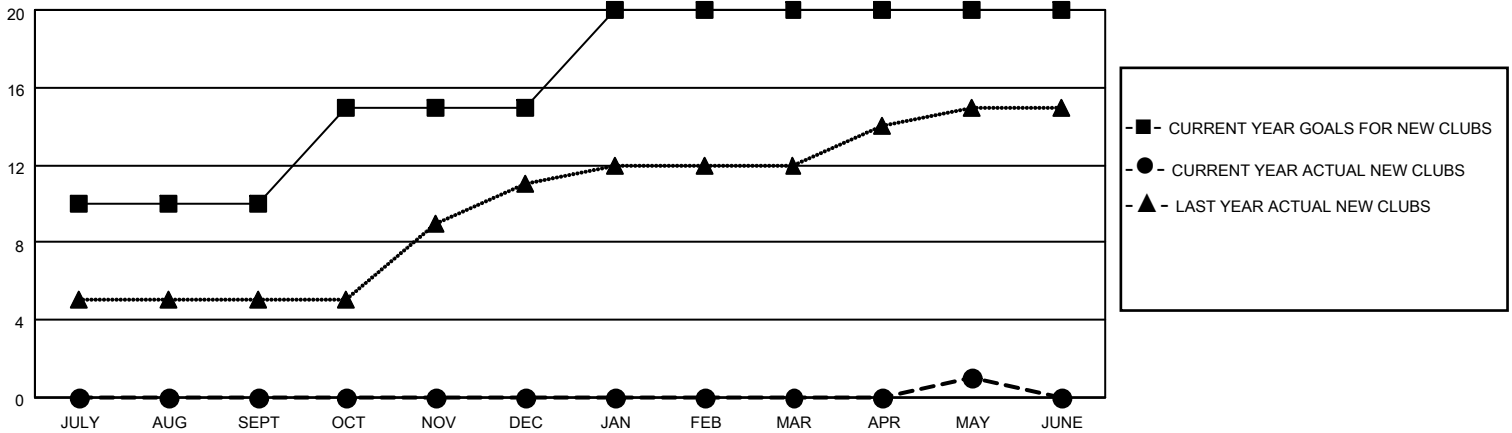
District 3232F1

Results as of: 5/31/2023

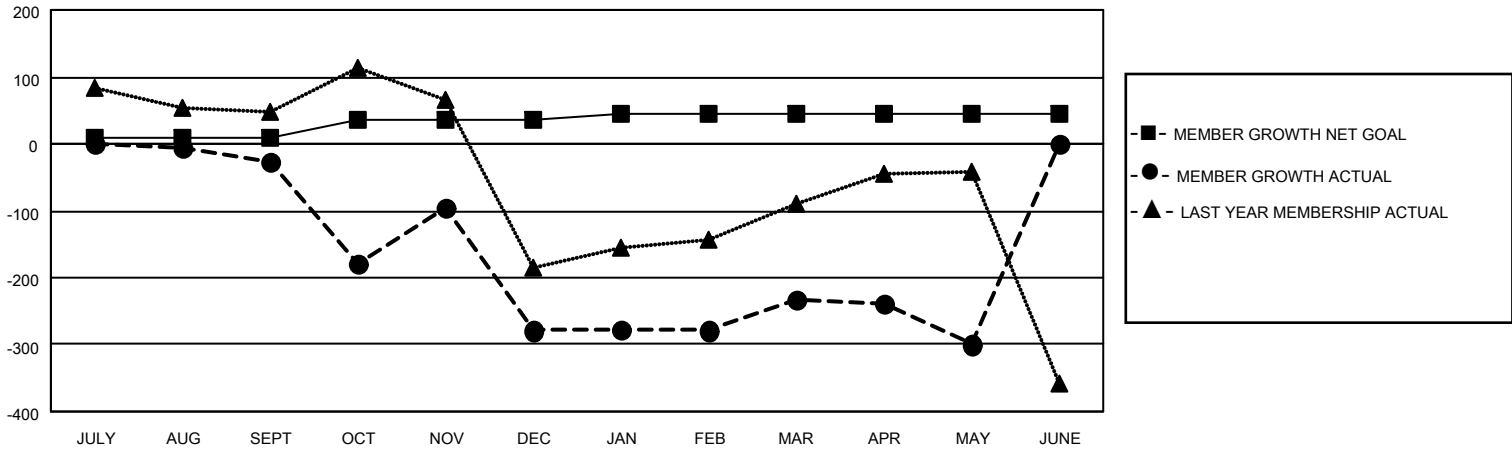
Clubs			
RESULTS FOR 2022-2023			
QUARTER	NEW CLUB GOAL	NEW CLUBS	DROPPED CLUBS
JULY/AUG/SEPT	10	0	0
OCT/NOV/DEC	5	0	4
JAN/FEB/MAR	5	0	0
APR/MAY/JUNE	0	1	1

Members			
RESULTS FOR 2022-2023			
QUARTER	MEMBER GROWTH NET GOAL	MEMBER GROWTH ACTUAL	DROPPED MEMBERS ACTUAL (including transfers)
JULY/AUG/SEPT	10	50	69
OCT/NOV/DEC	25	121	370
JAN/FEB/MAR	10	81	16
APR/MAY/JUNE	0	138	180

GOALS AND ACTUAL NEW CLUBS CUMULATIVE



GOALS AND ACTUAL MEMBERS CUMULATIVE



DROPPED CLUBS: 5	
DROPPED MEMBERS	
DECEASED	6
CLUB CANCELLED	155
OTHER	474
TOTAL	635

68 CLUBS OF 131 ADDED 1 OR MORE NEW MEMBERS

[CLICK HERE FOR CUMULATIVE MEMBERSHIP DATA](#)

<u>GENDER DISTRIBUTION</u>	
MALE	2,264 (61.45%)
FEMALE	1,420 (38.55%)
NON BINARY	0 (0.00%)
PREFER NOT TO ANSWER	0 (0.00%)
TOTAL FAMILY UNIT MEMBERS	2,280
FAMILY MEMBERS PAYING HALF DUES	1,442